

NetSecL 3.2 comes with a brand new XFCE which increased dramatically the performance experience, we closed many bugs and also gained more compatibility to OpenSuse 11.4 – most packages are 11.4 compatible. GrSecurity kernel is updated to 2.6.32.8 please check installation instructions if you wish to use GrSecurity. And here is the work we have done:

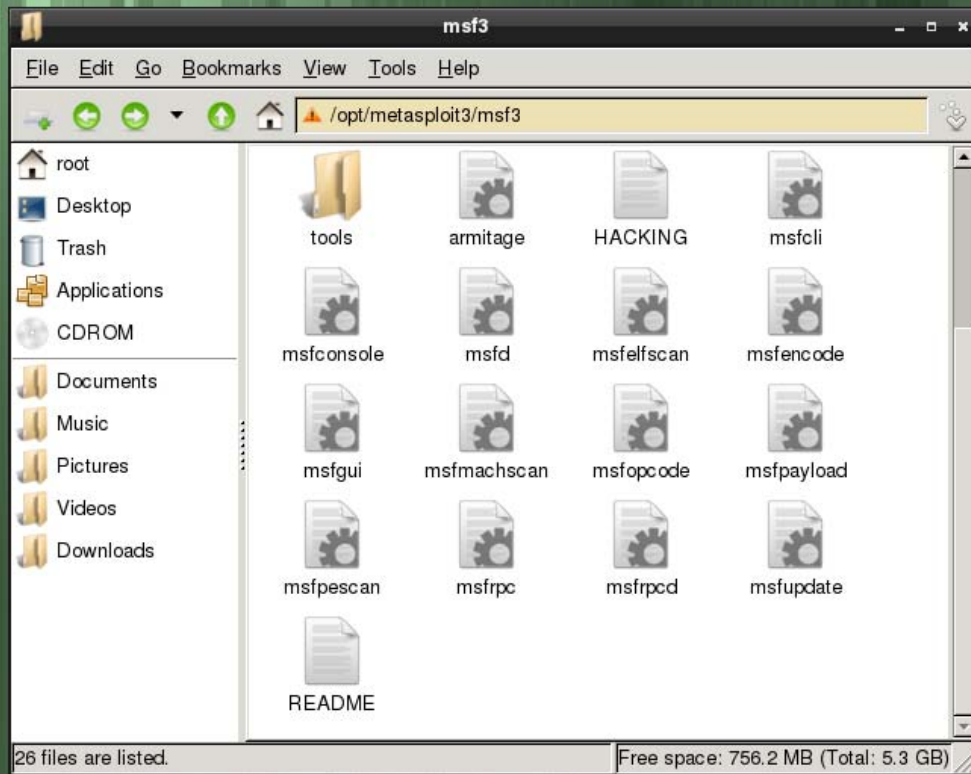
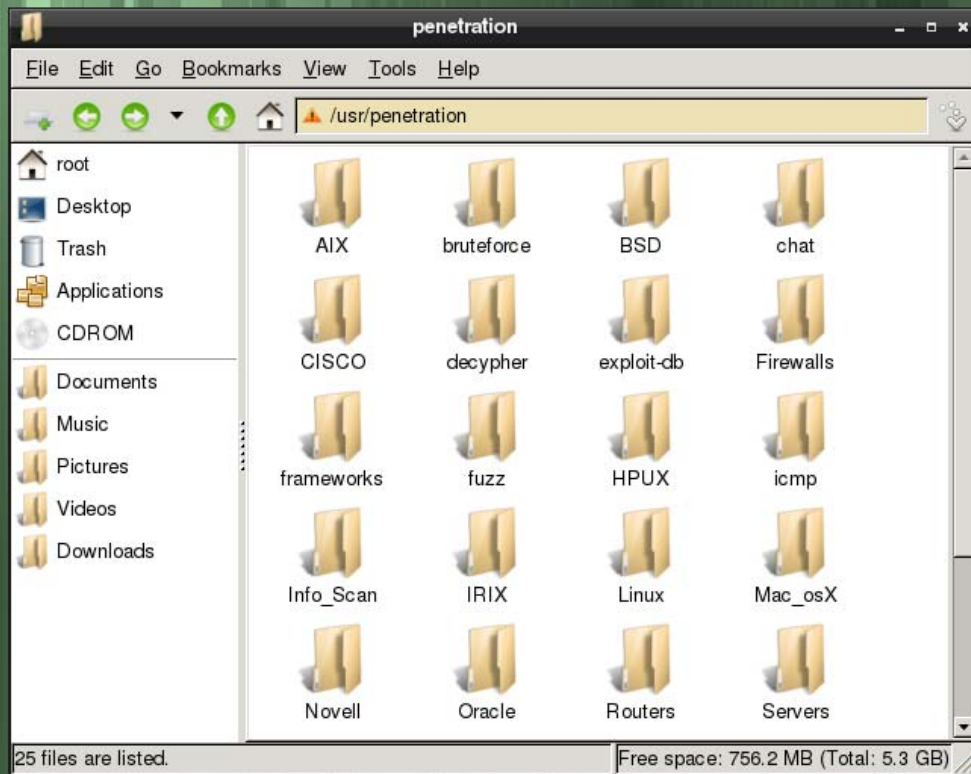
- Ext4 issue with GrSecurity is resolved
- booting in VM with new GrSecurity resolved
- New Metasploit
- Firefox 5
- Updated Exploit-db repository
- GrSecurity Kernel – locked from zypper – you can update the whole system without worrying
- Snort-inline reintegrated (get snort rules and change them to drop – if you use the advanced firewall)
- Size of the ISO smaller with 200 MB this allowed us to have a sub project NetSecL Toolset a minimal VM with console, webshell and all pentesting tools!

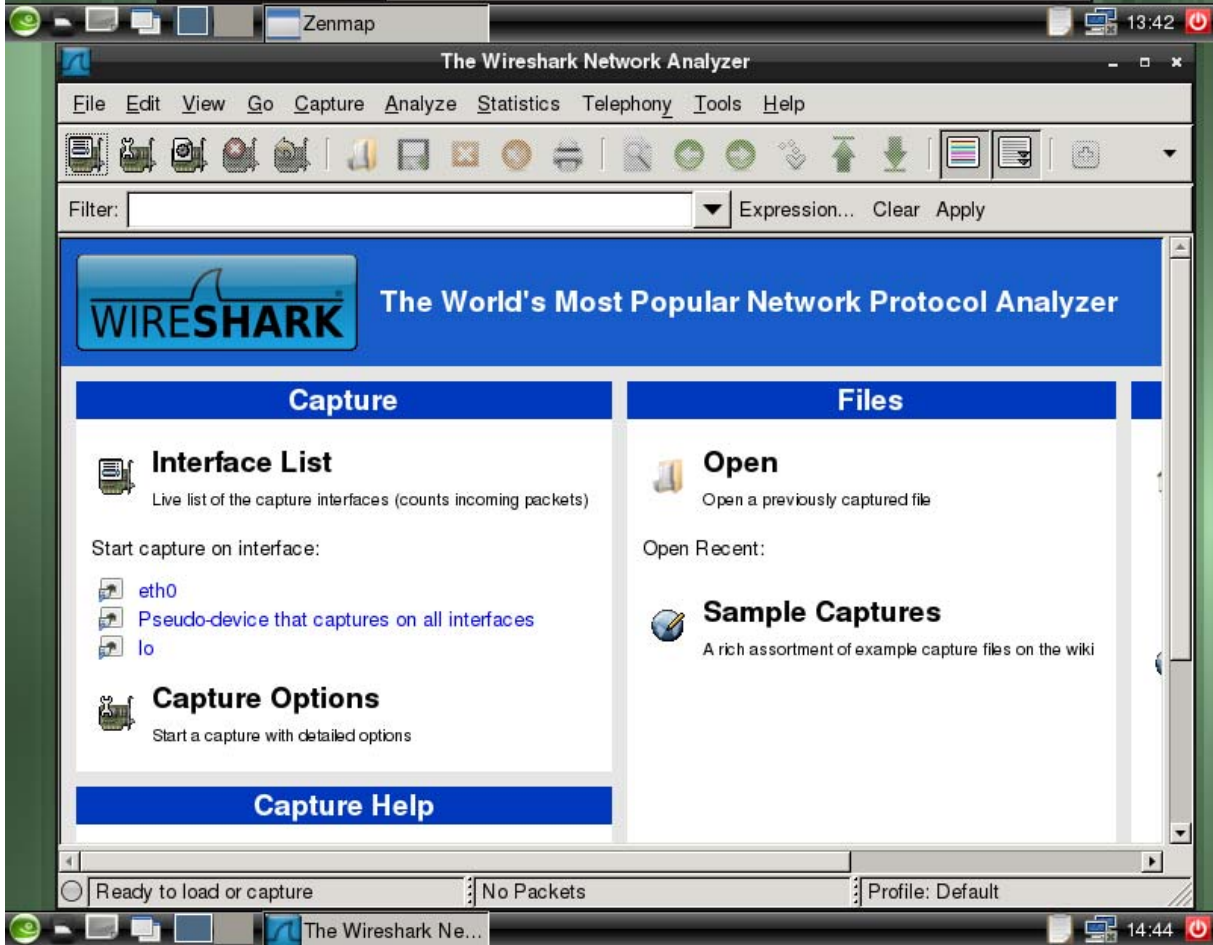
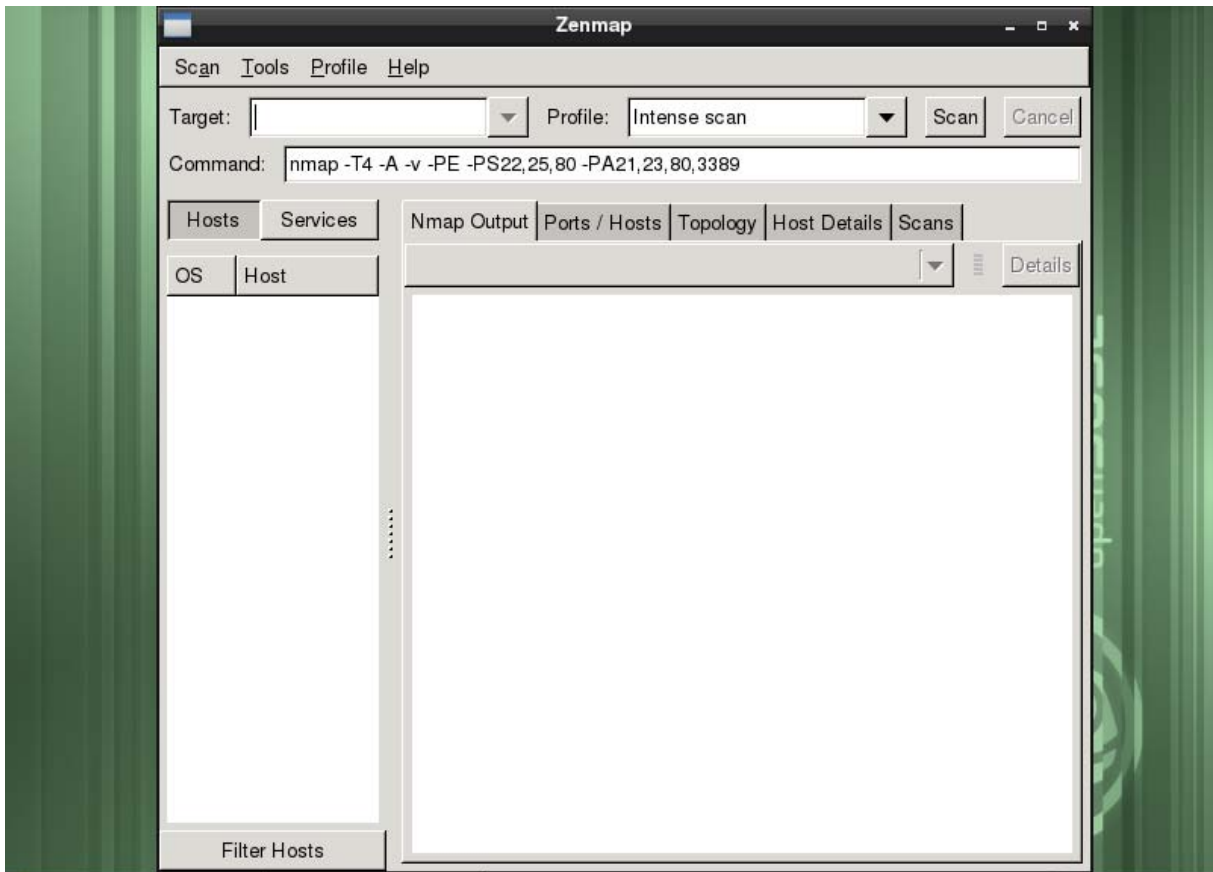
Minimal System Requirements for running the live DVD: 512 MB of RAM

Minimal System Requirements for installing: 1 GB of RAM, 5 GB partition at least (SATA - tested, should work on IDE too).

See the eye-candies below ☺

Enjoy,
The NetSecL Team





OpenVAS-Client

File View Manager Task Scope Report Extras Help

Global OTP Settings

Comments Options Report

Name	Type	High	Medium	Low
Global OTP Settings				
global				

General

Plugins

Credentials

Target selection

Access Rules

Prefs.

KB

General scan options

Port range: default

Consider unscanned ports as closed

Hosts to test concurrently: 20

Checks to perform concurrently: 4

Path to the CGIs: /cgi-bin/scripts

Do a reverse lookup on the IP before testing

Optimize the test

Safe checks

Designate hosts by their MAC address

Port scanner:

Message log

Welcome to OpenVAS-Client, <http://www.openvas.org/>
NessusClient origin: Copyright 1998-2007 by Renaud Deraison

OpenVAS-Client 14:45

EtherApe

File Capture View Help

Start Pause Stop Pref. Prot.

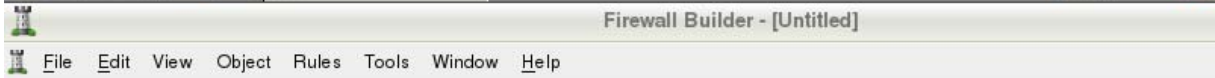
Protocols

Reading data from eth0 in IP mode

openSUSE

EtherApe 13:42

```
LXTerminal
File Edit Tabs Help
Executable shared library bss : Killed
Executable shared library data : Killed
Executable anonymous mapping (mprotect) : Killed
Executable bss (mprotect) : Killed
Executable data (mprotect) : Killed
Executable heap (mprotect) : Killed
Executable stack (mprotect) : Killed
Executable shared library bss (mprotect) : Killed
Executable shared library data (mprotect) : Killed
Writable text segments : Killed
Anonymous mapping randomisation test : 17 bits (guessed)
Heap randomisation test (ET_EXEC) : 13 bits (guessed)
Heap randomisation test (PIE) : 23 bits (guessed)
Main executable randomisation (ET_EXEC) : No randomisation
Main executable randomisation (PIE) : 15 bits (guessed)
Shared library randomisation test : 17 bits (guessed)
Stack randomisation test (SEGMEEXEC) : 23 bits (guessed)
Stack randomisation test (PAGEEXEC) : 23 bits (guessed)
Return to function (strcpy) : Vulnerable
Return to function (memcpy) : Vulnerable
Return to function (strcpy, PIE) : Vulnerable
Return to function (memcpy, PIE) : Vulnerable
linux-72wx:~ #
```



Open Save Find Object

User

Filter:

Object

- User
 - Clusters
 - Firewalls
 - Objects
 - Services
 - Time

Welcome to Firewall Builder

Quick Start Guide

There is a short online guide that provides basic information to help new users save time when first learning to use Firewall Builder.

In this guide you will learn:

- Layout of the application windows
- Location of frequently used command buttons
- How to create and edit objects
- Where to find predefined system objects

The guide will open in the web browser

Do not show this again

