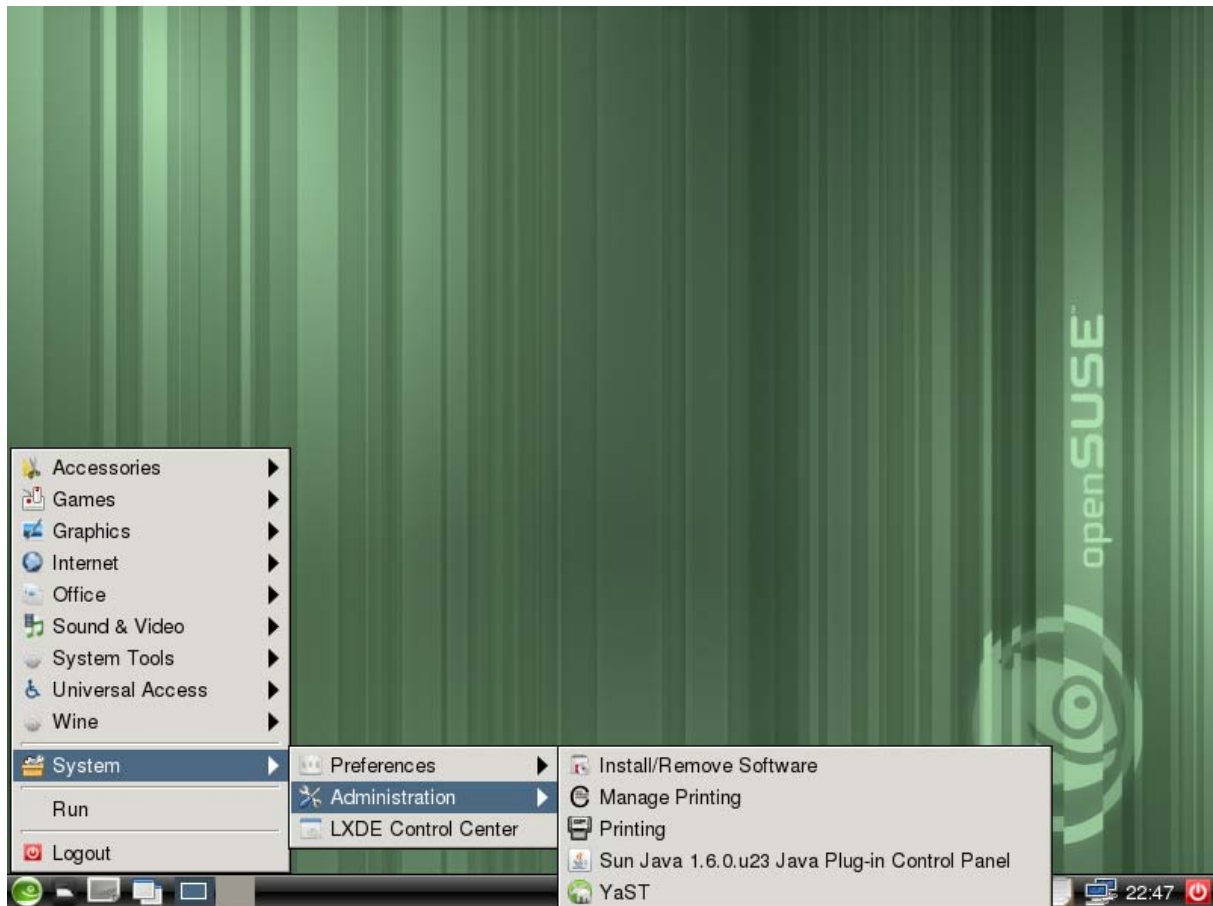


Installation Guide NetSecL 3.2

Hello and welcome to the installation guide of NetSecL 3.2

Please notice that we are not responsible for any damage. Be careful, it is your own data – read carefully, if you have questions ask on the forum.



Go to System>Administration>YAST>

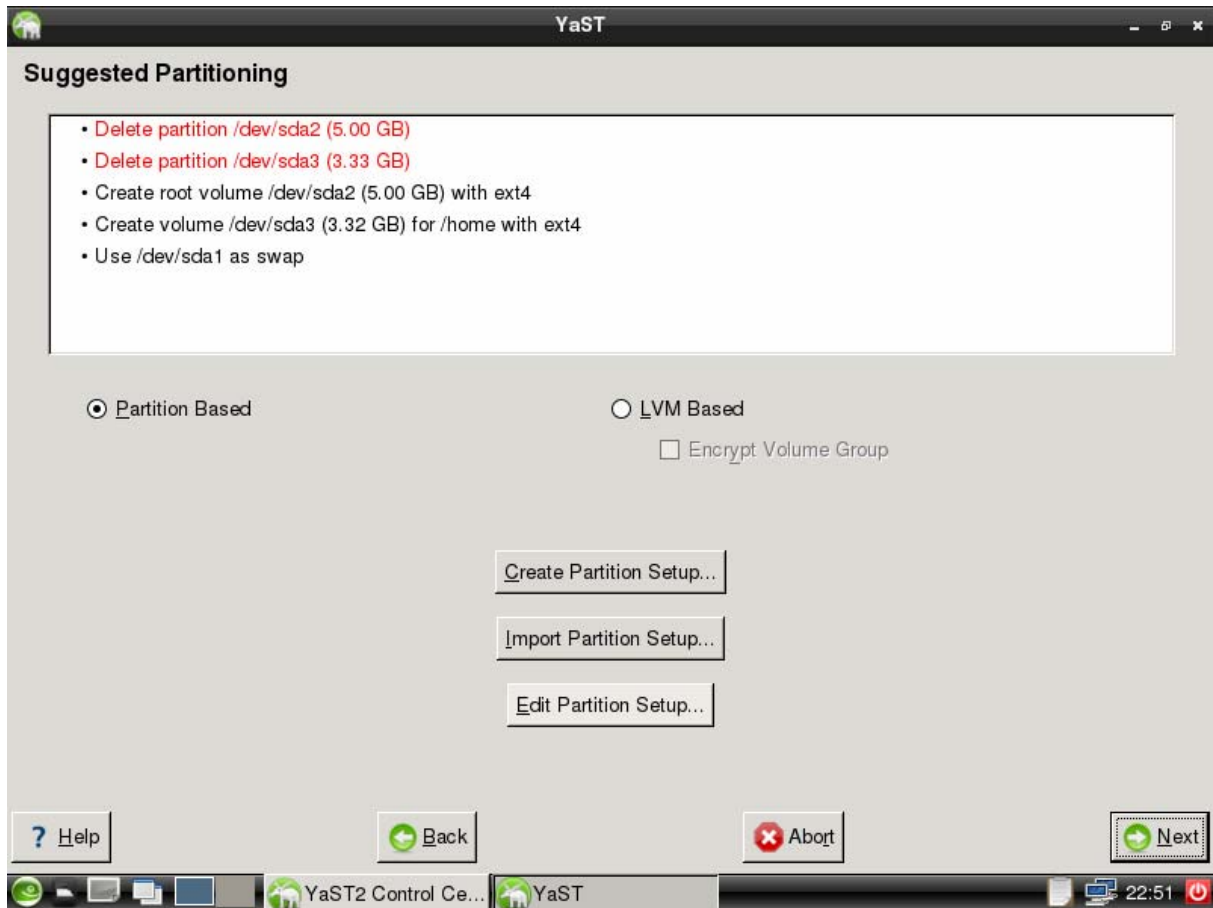


Choose Live Installer and run it.

When the installer appears agree to the License and click Next.



Chose your default time zone.



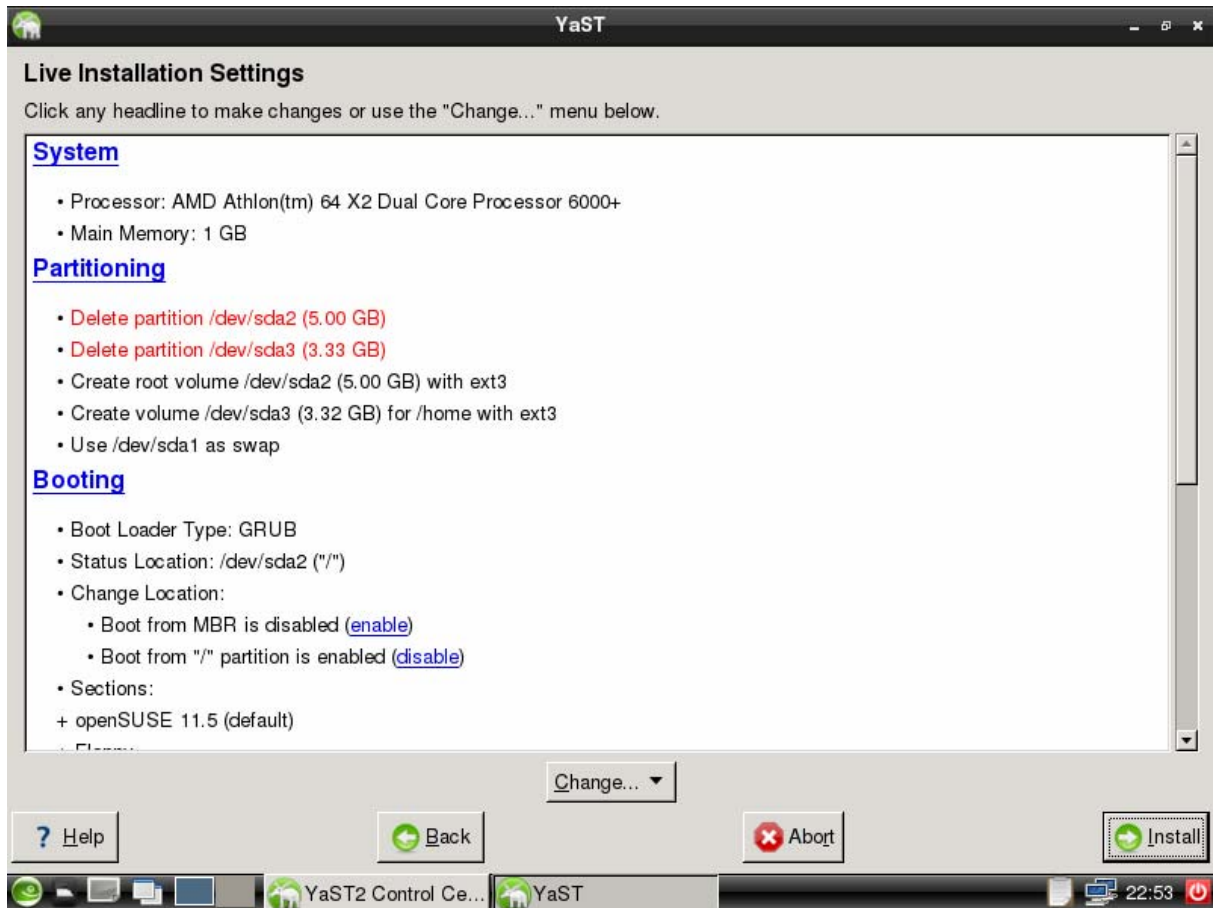
Be careful here not to wipe any important data. Unlike the previous version you can leave ext4 here we fixed this issue. If the partitions are ok and you agree with the selected partitions, just click Next



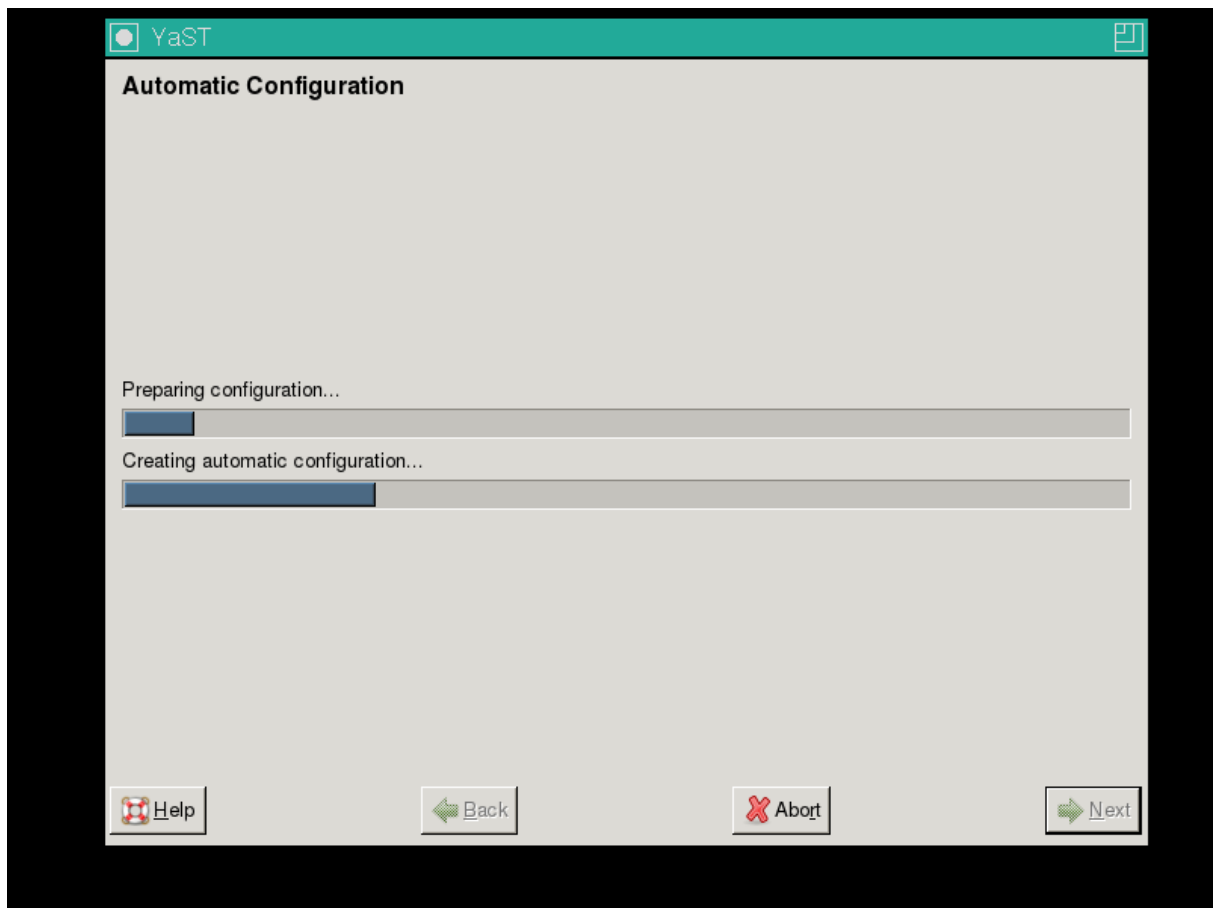
Create a user. By default there are 2 users the root and tux and the default pass is linux. If you leave this blank it is not a problem the defaults will be kept – you can change the passwords later with passwd. Click Next.



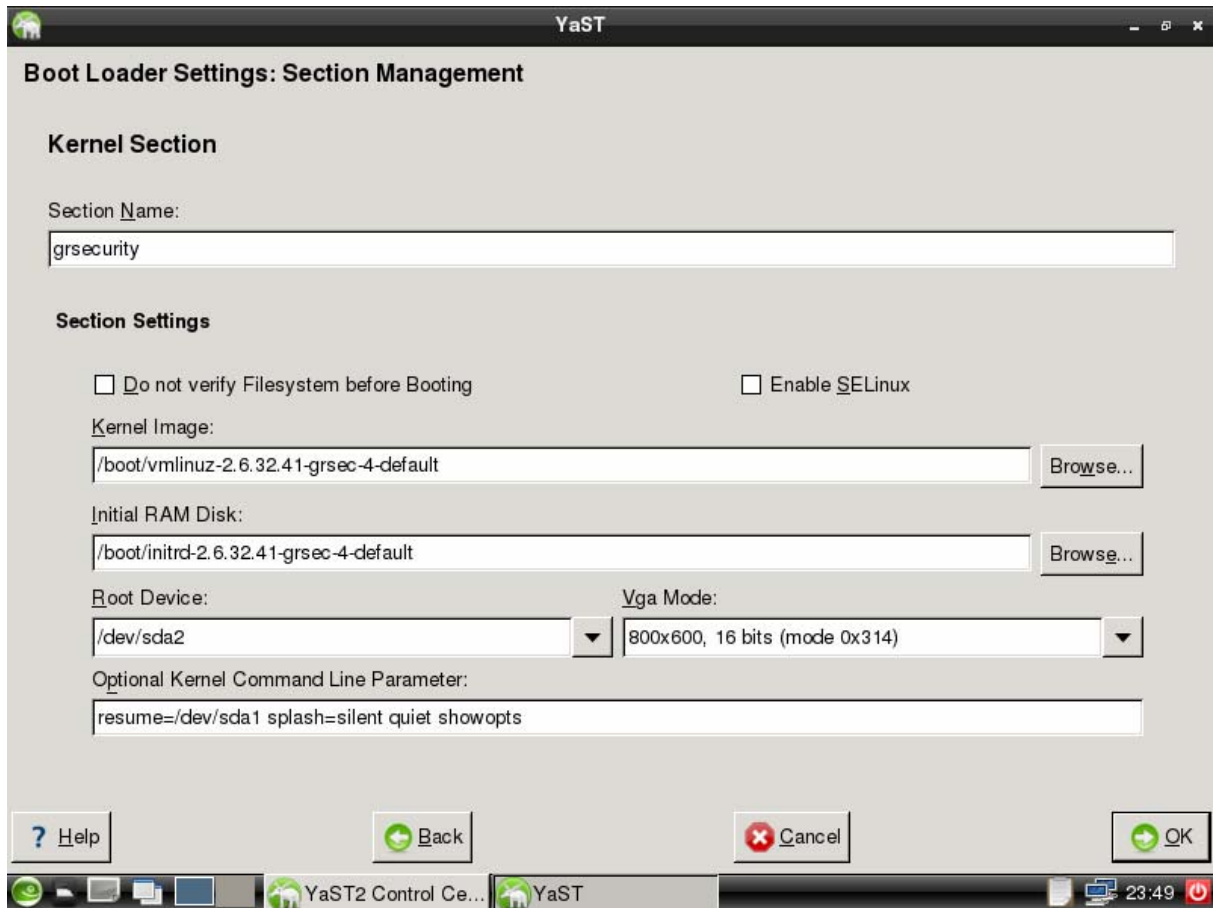
Change the root password or leave it blank the default is linux.



You can click install. It will install and transfer the main image to HDD. After your first HDD boot, the installation will continue. After rebooting remember to remove the DVD.



Automatic Configuration begins, wait until it finishes if asked answer the questions. Note the installer sometimes needs from you to click on the desktop to place windows, but it should not be a problem if you don't.



After finishing the installation go to
System>Administration>YAST>Bootloader
and add the GrSecurity kernel if you are going to use it. It is locked by
zipper so you don't have to worry that you will mess up GrSecurity if you
are updating the system.